



Minimalist window with concealed handle **AS 80US NEO**

The NEO variant is a system designed for projects where minimalism is essential. The structural concept is based on a concealed sash, as in the AS 80US system, thanks to which the fixed and opening sections appear identical from the outside.

In the AS 80US NEO system, the handle is integrated and concealed within the sash, while clean lines are further enhanced by concealed hinges.





SELECTED SYSTEM PARAMETERS


from 0.77 W/m ² K	E2400 (E2400 Pa)	class 4	class C3	4
Thermal insulation (Uw)	Water resistance	Air permeability	Wind load resistance	Number of thermal variants



DESIGN & FUNCTIONALITY


- 3** Three-chamber aluminium profile construction.


 Invisible window sash when viewed from the outside.


4  Four thermal variants available.


 Possibility of creating an all-glass corner at any angle using adjustable connectors.

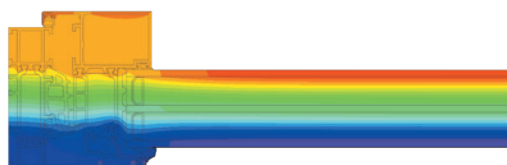
2  Two hardware pusher variants: aluminium and plastic.
- ASM**  Compatible with a system-dedicated mosquito net.

 Available in U, R, RU and RU variants with a movable mullion.

 Designer aluminium drainage caps.

 Option to integrate with modern smart home solutions.

 Can be combined with other Aluron systems.



Temperature distribution

SYSTEM CHARACTERISTICS

2700 mm	1400 mm	200 kg	80 mm	21-44 mm	84 mm	78 mm
Maximum sash height	Maximum sash width	Maximum sash weight	Frame depth	Glazing range	Window sash depth	Minimum visible frame width

Cross-section of an opening window with a hidden sash

